

info@roloautomation.co.uk

M-Line PD
Automatic Sliding Door

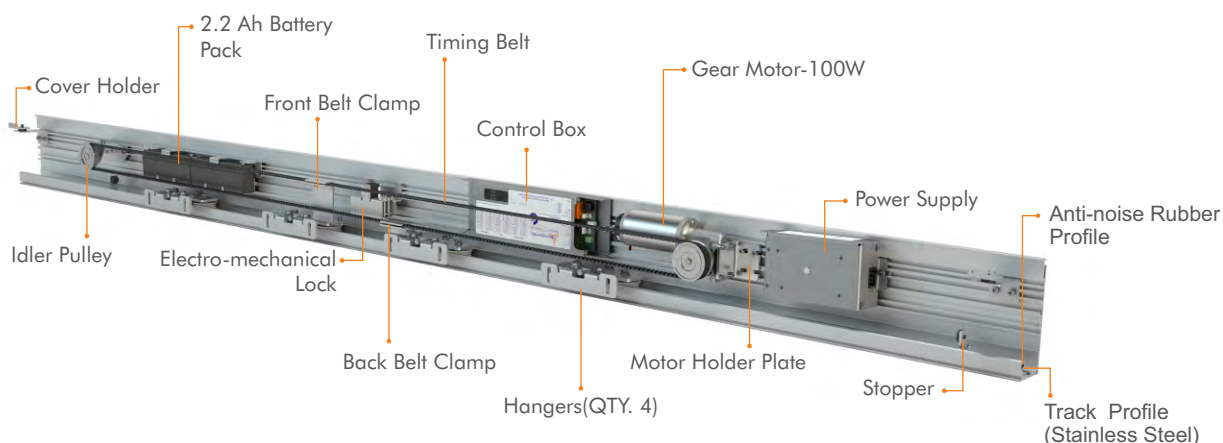
Primedrive240

By bringing original design, simple aesthetic qualities and top-notch German technology together, we have managed to create dependable and powerful sliding entry solutions. Many and various interior or exterior applications can benefit from our Primedrive systems.

From undemanding entrances to places with high traffic, doors with normal or triple-glazing glass, average-sized entries or tall wide heavy doors, normal passages or escape routes, Deuschtec has the system to meet your needs.

Deuschtec Primedrive series are there to gift any architecture with a stunning look.

Whether you are searching for a unique entrance for your next project or you wish to give your building a whole new look, our Primedrive series will make you beam with satisfaction.



Standards	Primedrive240
DIN18650	✓
EN16005	✓
EN60335	✓
EN ISO 13849	✓

Standards	Primedrive240
AutSchR	-
TÜV approved	✓
CE conformity	✓
Tested for 1,000,000 cycles	✓

Technical Detail Primedrive240

Opening width - single panel	800 - 2000 mm
Opening width - double panel	1000 - 3000 mm
Max leaf weight, single	1 x 200 Kg
Max leaf weight, double	2 x 150 Kg
Operator height	100 mm
Operator depth	174 mm
Opening speed	Variable up to 1.1m/s (Double leaves)
Closing speed	Variable up to 1.1m/s (Double leaves)
Hold-open time	0 - 30 s
Ambient temperature	-15 to + 50°C
Protection class	IP 20
Track profile	Stainless Steel, Aluminum
Anti-noise rubber profile	✓
External protected power supply	✓
Power supply power	230V / 92VA
Gear motor power	100 W
Number of motors	1
Number of control units	1
Number of hangers per leaf	2
Dual gear motor and control unit set for master and slave concept	-
Max power consumption	250 W

Technical Detail Primedrive240

Max operation cycles with 2.2 Ah battery (Optional)	≈400
Possibility to adjust force limitation according to DIN18650 and EN16005	✓
Possibility to use safety sensors with testing signal	✓
Emergency exit routes in both directions	-
Mechanical key switch (Optional)	✓
24V DC output for external accessories	✓
Power Lock	✓
Possibility of using electromechanical lock (Optional)	✓
Lock monitoring	✓
Possibility of using digital programme switch (Optional)	✓
Read-out error memory with error codes (with digital programme switch)	✓
Programmable output (Optional)	✓
Programmable input (Optional)	✓
DMS (Optional)	✓

Frame Types

TBS	✓
THB	✓
UTS	✓
Saturn	✓
Frameless	✓

CONTROL UNIT

By drawing on the most advanced German engineering technology together with a fruitful collaboration with German electronic manufacturers, Deuschtec Primedrive series' controlling microprocessor circuit boards have been made to respond to all European Union and German necessities such as machinery directive, electromagnetic compatibility (EMC) and low voltage directives. Moreover, its software and electronic design have met all relevant German and European standards such as DIN18650, EN16005 and EN ISO13849. These distinguishing features guarantee the highest levels of security and the most durable system. Furthermore, due to the use of sophisticated technologies to save energy and resources you can be justly proud of enjoying an eco-friendly technology!



EN ISO
13849-1

DIN
18650-2

DIN
18650-1

EN
16005

EN
60335-1

Some other points worth mentioning are:

- Ability to work with battery in case of power-cut for non-escape models.
- Ability to charge and perfectly maintain the battery, which brings the battery a much longer life time.
- Ability to match with various types of sensors available in the market.
- Ability to be adjusted and programmed by digital programme switch.
- Self-diagnosis and error detection.
- Having standard RS 485 interface for connecting to other accessories.
- Ability to automatically adjust speed and slopes according to input voltage changes.
- Ability to work with 20% higher or lower than nominal input voltage.
- Completely protected system input ports which reduces the damage risk due to human error during installation.
- Possibility of using more software and hardware options by using DMS device.

GEAR MOTOR

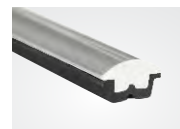
Like its other state-of-the-art parts, Deuschtec Primedrive series' motors are fully made in Germany. Their 100 W motors are absolutely indestructible and are there to ensure reliable performance for a life-time. Great efficiency and enhanced function are achieved through employing years of experience and the latest technologies in the process of our motors' design and production. These brushed DC motors are so quiet that while in action, you will hear nothing but a muffled sound.



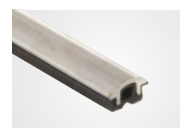
TRACK PROFILE

Deuschtec Primedrive series play the most hauntingly beautiful music: smooth silence! By making use of stainless steel or detachable aluminum track profiles together with rubber profiles, we have managed to present you with trustworthy hard-wearing entry solutions which will please your eyes with their splendor and will treat your ears kindly by their soft performance. Their artistic profiles will also make our Primedrive series stay with you for a much longer time. Due to employing anti-noise rubber profiles under track profiles, our door movements are smooth and hushed.

When Deuschtec's detachable aluminum track profiles are worn out after a lengthy period of time, they can easily be replaced, which costs much less in comparison with replacing the whole rail.



Since Deuschtec's stainless steel track profiles are rust-proof and anti-abrasion, they will never need to be replaced. This will be a great value for your money during time and will prevent any possible complication which may happen when replacing profiles.





Primedrive240

| Automatic Sliding Door



POWER LOCK

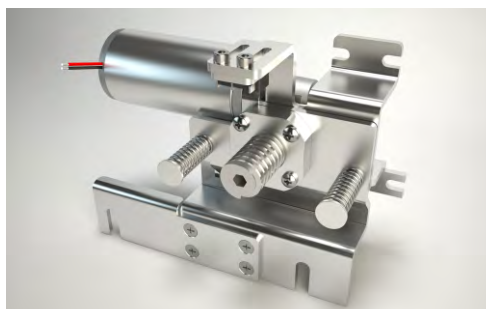
In many cases, there is no real need for (optional) electromechanical lock and buildings ensure security by other means. However, it is necessary for the entrance to be allowed limited access. In this case, power lock free function is a wholesome solution. When the door is locked, if there is pressure on it for becoming open, the motor will use its full power in the opposite direction and make it practically improbable to enter for unauthorized individuals.



HSML

HIGHLY SECURE ELECTROMECHANICAL MULTI-POINT LOCK [HSML]

This highly secure electromechanical multi-point lock is a real necessity in places where increased security is demanded. Using steel pins, it will simultaneously lock the leaves together and to the floor, which has been pre-drilled to provide the required holes for the pins. Intruders will be slowed down and stopped thanks to this lock's power to resist dynamic/static forces and aggressive tools such as wedges.



FRAMES

THB - THERMAL BREAK FRAME

A great choice of frame to pair with this impeccable series is thermal break frames (THB) which by insulating the door against undesired or harsh weather conditions, save the energy and consequently, your budget! Furthermore, since these are incredibly strong frames, they are an ideal option when heavy doors are required.



TBS - THERMAL BREAK FRAME

When saving energy is of importance, TBS frame is an economical and inexpensive solution. Besides being thermal break, it can be coupled with double-glazing glass. Its thinness and also being an energy-saver, have made TBS frame a smart gorgeous choice for modern architecture. This type of frame has successfully been tested for escape doors.



UTS

This frame is the non-thermal break version of TBS and has all its advantages. Due to not being thermal break, it has an even more competitive price. While enjoying all TBS beauties, for buildings' inside doors and for places where the exchange of cold and hot air does not matter much, UTS is an excellent value.



SATURN

This is a reasonably-priced frame suitable for single-glazing and tempered glass. When you wish to have a glass frontage and yet, prefer to use a thin frame instead of frameless glass, Saturn is a convenient low-priced solution.



FRAMELESS

This full-glass system is the most suitable choice for those who wish to have elegance combined with radiance.

These sliding doors provide excellent light exchange between inside and outside.



ACCESSORIES

Battery

Primedrive series will continue functioning even after a power-cut thanks to their powerful 2.2 Ah batteries.

Needless to say, the number of operation cycles depends on some key factors such as door leaves' weight, traffic, speed adjustment, etc.



Digital Programme Switch

User-friendly has been given a whole new meaning with this digital programme switch's easy-to-read, full-text display. You will get easy access to all performance data and parameters and for any special need you might have, its adjustment and diagnostic processes can be accurately duplicated or customized. Protection password code is another significant feature of this digital programme switch. Such a terrific "optional" part cannot be ignored!



Electromechanical lock - GN

Deuschtec Electromechanical lock - GN has been a dependable way to safeguard your security all the time. It utilizes steel pins to lock both leaves simultaneously and therefore, is much safer compared to those models which lock the timing belt or just one leaf. Furthermore, since it employs bi-stable mechanism, system's power reset does not affect the lock's state. Due to using powerful batteries and an intelligent circuit, battery usage is reduced to zero when the door is locked and there is a power-cut.*



Mechanical Key Switch

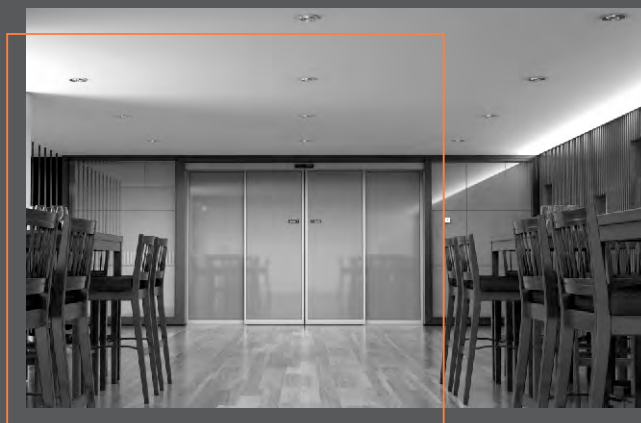
Deuschtec Primedrive presents its mechanical key switch with the five modes of full open, partial open, lock, automatic and one-way. Simple yet functional, this is another accessory which will definitely come in handy.



*Thus, even weeks after the input electricity has been cut, the system can open the lock and the door by the key switch, which is an optional accessory and can be installed outside of the entry area.



Designed • Developed • Made in Germany



w w w . d e u t s c h t e c . d e

Deuschtec GmbH
Am Fuchsbau 13
15345 Petershagen/Eggersdorf
Deutschland

Phone: +49 (0)3341 30 22 4 - 0
Fax: +49 (0)3341 30 22 4 - 25

E-Mail: info@deuschtec.de



EN.42.27112022